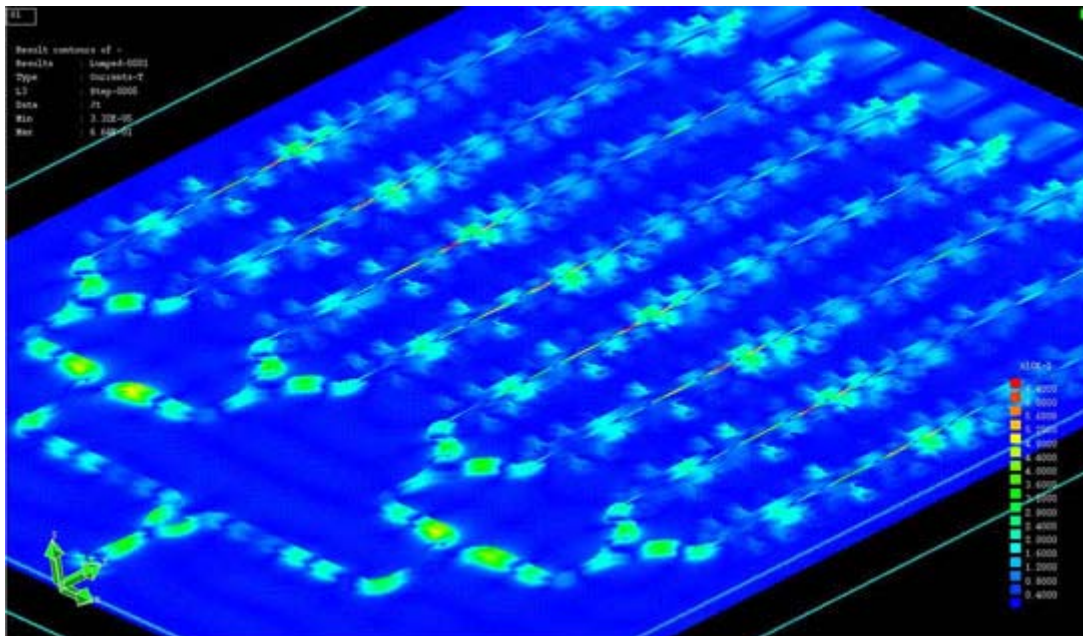


## SIMULATION OF LARGE STRUCTURES OF ON-CHIP EMBEDDED PASSIVES

Efield® is particularly suitable for very large structures of on-chip embedded passives. Efield® is a simulation tool including both frequency domain and time-domain parallelized solvers for distributed and shared memory multi-processor architectures. Efield® includes advanced user interface options allowing the user to import CAD-models from all common CAD systems.

Efield® includes advanced tools for microwave and RF components engineering such as

- Port excitations for homogeneous and inhomogeneous waveguides
- S-parameter calculation
- Near-field visualisation of currents and field



*RF MEMS phased array 35-37 GHz simulated with Efield® FDTD*

Efield AB, Skalholtsgatan 10 B,  
SE-164 40 Kista, Sweden  
Tel: +46 8 410 03 510  
Email: [contact@efieldsolutions.com](mailto:contact@efieldsolutions.com)  
[www.efieldsolutions.com](http://www.efieldsolutions.com)