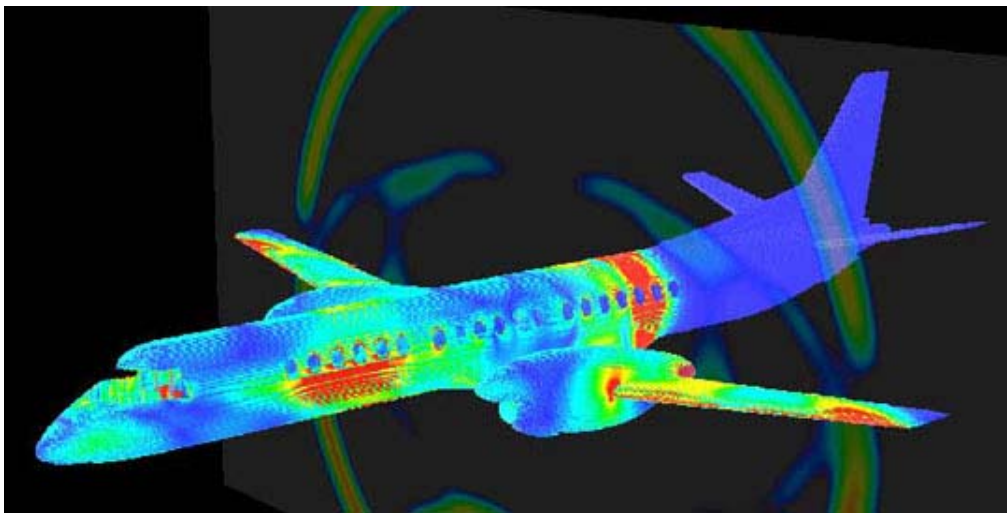


**LIGHTNING EFFECTS SIMULATED WITH EFIELD®**

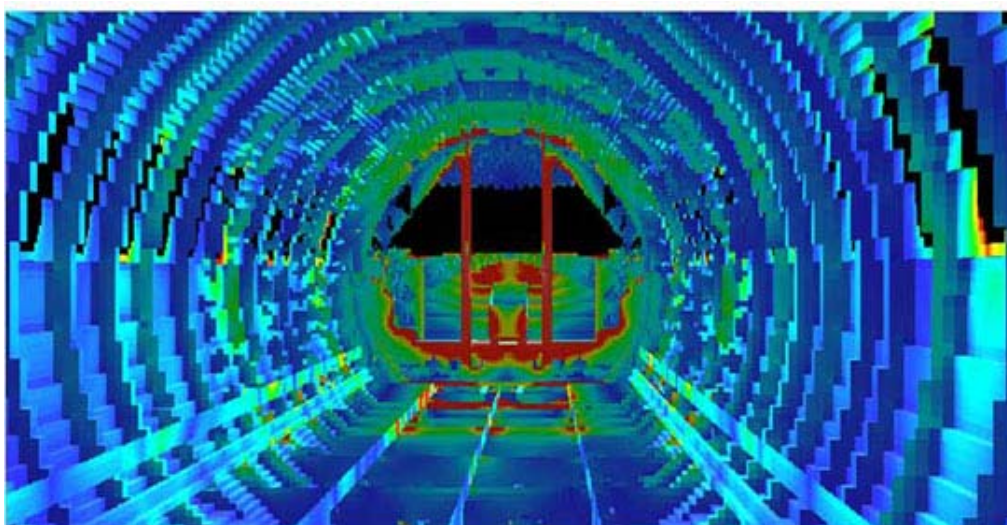
Lightning is a major threat to any complex system containing sensitive electronic equipment. Simulations are preferably performed in the time domain. Field penetration into the interior of an aircraft and the corresponding induced wire currents are examples of studies that can be performed with efield®.

**Efield® simulation of a lightning strike on SAAB 2000**

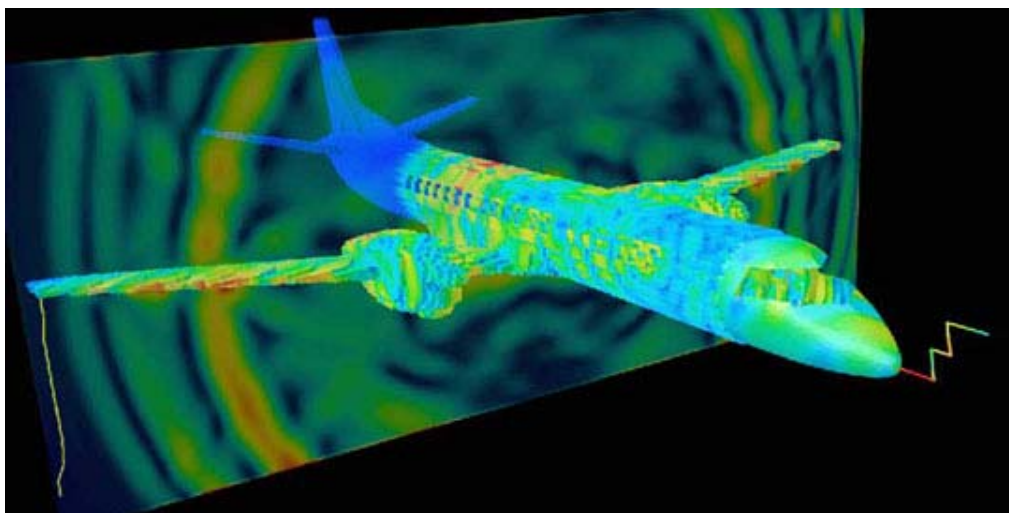
Simulation of a lightning strike on SAAB 2000. One billion cells were used in the FDTD model.



*Figure 1: Surface currents and fields of a SAAB 2000 aircraft*



*Figure 2: Surface currents inside a SAAB 2000 aircraft*



*Figure 3: Lightning simulation of a SAAB 2000 using Efield®*

Efield AB, Skalholtsgatan 10 B,  
SE-164 40 Kista, Sweden  
Tel: +46 8 410 03 510  
Email: [contact@efieldsolutions.com](mailto:contact@efieldsolutions.com)  
[www.efieldsolutions.com](http://www.efieldsolutions.com)