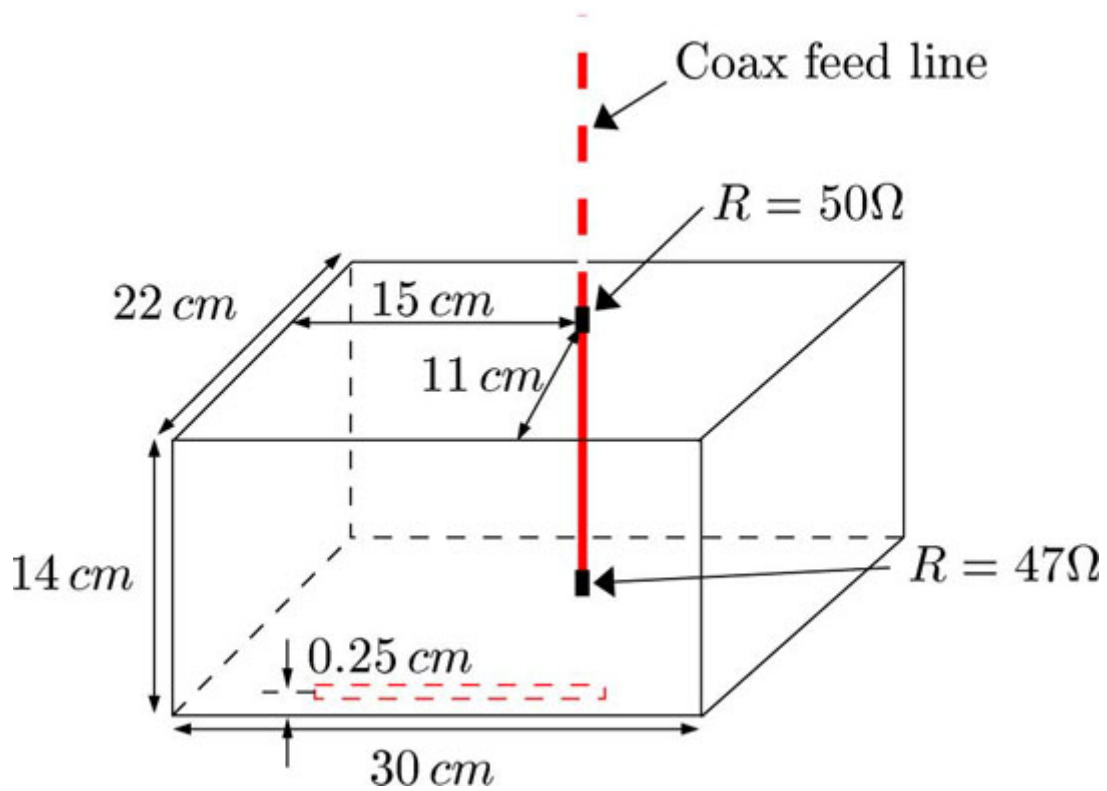


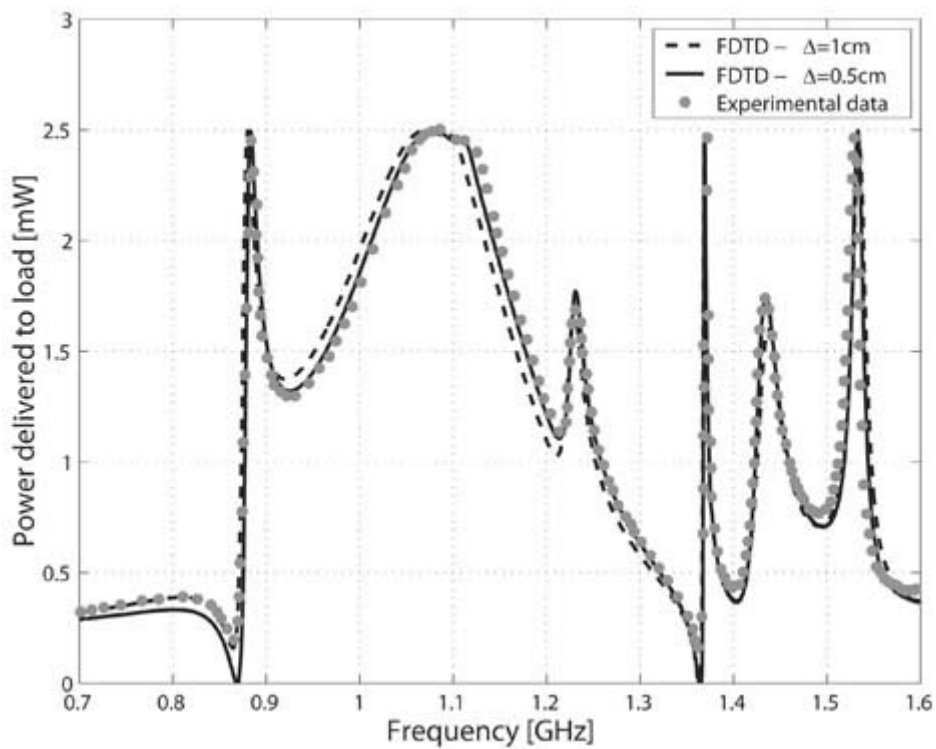
**EM INTERFERENCE WITH EFIELD®**

An important area is unwanted interference with EM fields generated by external and sometimes internal sources. Such fields may propagate as radiation through space or along conducting structures. The frequencies may range from very low (kHz) up to very high (tens of GHz). The penetration mechanisms as well as the test setups can be modeled by Efield®.

**Simulation of a shielded enclosure with Efield®**



**Figure 1: Shielded enclosure with a thin wire and slot**



**Figure 2: Results obtained by the Efield® time-domain solver**

Efield AB, Skalholtsgatan 10 B,  
 SE-164 40 Kista, Sweden  
 Tel: +46 8 410 03 510  
 Email: [contact@efieldsolutions.com](mailto:contact@efieldsolutions.com)  
[www.efieldsolutions.com](http://www.efieldsolutions.com)